



# DefaultUser Users Guide

Version 1.0 (April 2007)

By Philippe Devaud  
e-mail: philippe.devaud@gmail.com

## Introduction

DefaultUser was created to allow people to create an “auto regenerated account at logout” with ease.

An “auto regenerated account at logout” is an account that is cleaned at logout and restored as the original state that you have defined with DefaultUser.

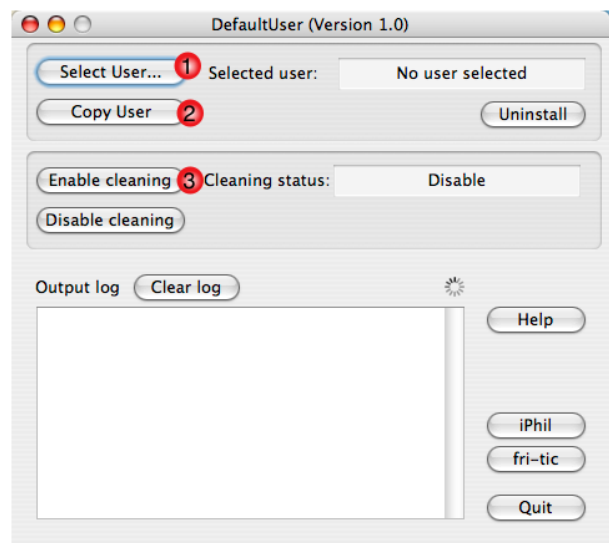
An auto regenerated account at logout is useful in most case, for examples:

- guest account on computers in a computer room, internet coffee, ...
- student account in schools

## Workflow

The workflow of DefaultUser works as follow:

1. Choose the User account you want “auto regenerate”
2. Copy the User account as reference
3. Enable the cleaning

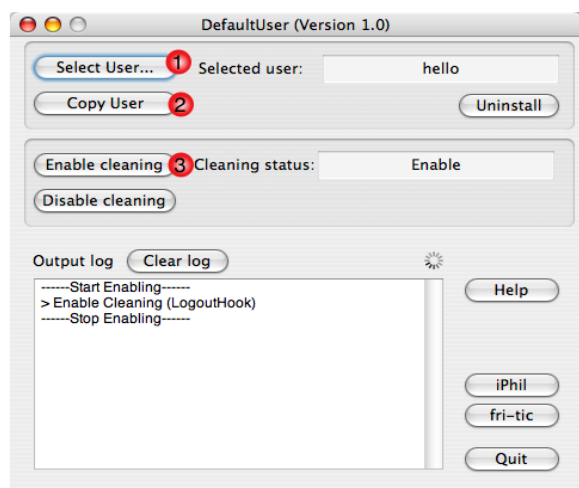


## How create an account as reference

You can create or use an already defined account. You must login into the choosed account and configure all what is needed in this account for examples: the Dock, applications parameters, desktop background, ...

Once the account configured, you can use DefaultUser from an administrator account to declare this account as “auto regenerated”.

1. Choose the User account you want “auto regenerate” (for example hello)
2. Copy the User account as reference
3. Enable the cleaning



## Modify the reference account

If a reference account must be modified. You must first “Disable cleaning” with DefaultUser. You must login into the choosed account and configure all what is needed in this account like: the dock, applications parameters, desktop background, ...

Once the account configured, you can use DefaultUser from an administrator account to declare this account as “auto regenerated”. See “How create an account as reference”.

## Install DefaultUser

Open the DefaultUser.dmg disk image, drag the application DefautUser in the Applications Folder (for examples).

## Uninstall DefaultUser

Start DefaultUser, click on the Uninstall button. Quit DefaultUser and put them in the Trash.